

# Structured Water Wheat and Corn Seed Sprouting Tests



Start with a selecting of seeds



Count out desired number of seeds in minimum groups of 20



Selected methods of evaluation media petri dishes and ziplock bags using soft absorbent paper towels. Date all containers



Discard non uniform or damaged seeds



Discard non uniform seeds across all groups



Minimum of 4 Groups of 2 types of seed.



Date all containers



Lay 2 to 3 layers of paper towels in petri dishes



Pre-cut absorbent paper towels to fit containers allowing for at least one fold



Place seed groups on paper towels in Petri dishes and cover with 1 or 2 layers of paper towels

When these simple procedures are followed, the results are always the same.

Seeds grown with structured water simply grow better, faster and stronger than seeds started with unstructured water. This results in higher yields and profits.



**Pour water samples from a common source into two like containers leaving one as the unstructured control.**



**Apply enough water in equal amounts to each sample container to assure complete moistening of all test material**

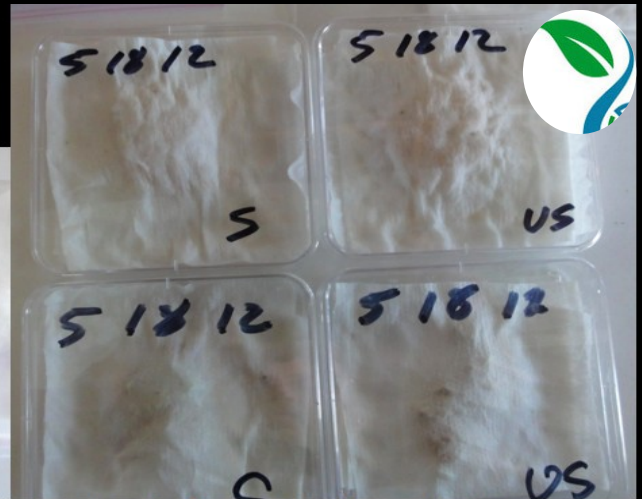


**Remove water to be applied to the samples with any means to assure even amounts of water are applied to each test sample.**



**Lightly tamp down paper towels around seeds and edges to assure surface contact to seeds and to assure that seeds remain moist.**

# Third day follow up inspection of sprout testing



Remove test containers from storage location and prepare to photograph results. Open petri dishes and peel away cover paper carefully. Inspect and photograph results quickly so samples do not dry out before closing and returning to cool dark storage for further inspection in the coming days.



Differences in growth  
are apparent  
in all samples.

5/21/12



5/21/12



Significant differences can be noted between the treated seeds on the left and the untreated seeds on the right.



It can be easily seen that the seeds treated with structured water on the left are far more vigorous and healthy than those seeds treated with unstructured water shown on the right.



**Average increases of 20%  
Better root stems.**

**Superior development  
may be seen in the sample  
below.**

5/21/12



US



S

**Untreated seeds  
typically smell moldy and  
are become discolored  
in a short period of  
time.**

5/24/12



### BENEFITS OF STRUCTURED WATER

- \* Sprout vitality increases 20 - 30% or more
- \* Superior root system development
- \* Increased nutrient uptake
- \* Reduced fertilization
- \* Faster growth
- \* Increased soil absorption
- \* More nutritious crops
- \* Longer shelf life
- \* Reduced water usage
- \* Better tasting

**MORE PROFIT**

